

Gas supply panel HP 202

The gas supply panel QMT 7HP202 is a single stage gas supply panel. Two stage supply stations are preferred when a stable outlet pressure is required. It serves the safe supply of pure and mixed gases from single or bundled cylinders.

The panel is mounted on a stainless steel console consisting of a pressure regulator with in and outlet pressure manometers as well as a relief valve and shut-off valve for the process gas and purge gas as standard.



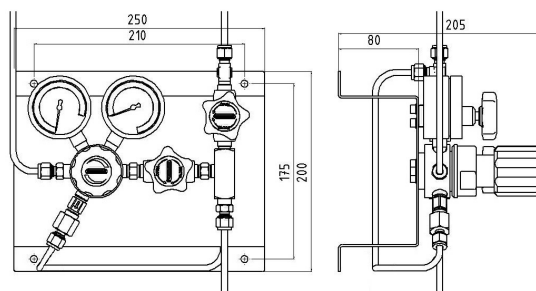
081112:3_eng

Application area

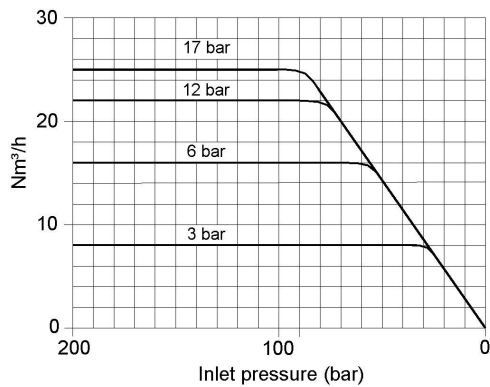
Especially for gases with high requirements on purity to 6.0. Secure and leak proof. Through our special cleaning system our pressure regulators are ECD – able.

Technical details

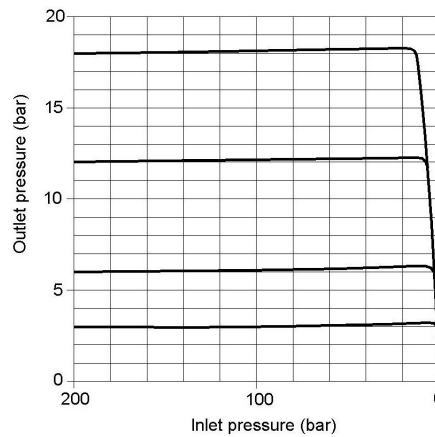
Housing:	St. steel 1.4404, electro polished or Brass, Nickel & matt chrome plated
Gasket:	PCTFE
Diaphragm:	1.4435
Leakage rate:	10 ⁻⁸ (mbar l/s) Heliumläcktest
Gas purity:	≤ 6.0
Max. Inlet pressure:	300 bar
Regulating area:	0,1-3; 1-6; 1-12, 1-17 bar
Operating temp.:	-20 °C till +70 °C
Gauges:	Safety version to EN 837-1 KL1,6
Size (WxHxD):	250 x 200 x 205 (mm)
Weight:	3500 g
Connections:	NPT 1/4" f



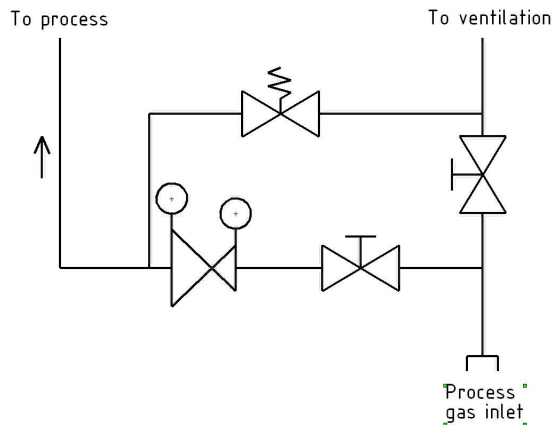
Performance curve 7HP 202



Dynamic flow curve 7HP 202



Flow diagram



Order details

Material:	QMT 7HP202	= St. steel
	QMT 7HP202MS	= Brass
Inlet pressure:	01	= 200 bar
	02	= 300 bar
Outlet pressure:	02	= 0,1 - 3 bar
	03	= 1 - 6 bar
	04	= 1 - 12 bar
	05	= 1 - 17 bar

Regulator type 1-stage with internal purging

QMT 7HP202	- 02	-03	- Gas
Type	Inlet	Outlet	Gas type